

MISSION

Seoul National University Hospital has the mission of helping human beings to enjoy a healthy and happy life by providing the world's best education, research and medical care.

VISION

- The most trusted hospital, with the best medical care
- A hospital guiding the future of life
- A hospital fostering leaders for global healthcare
- A hospital engaging in policy cooperation and pursuing advanced healthcare

Beyond
Excellence

A Better Future With You

Seoul National University Hospital's journey has shaped the history of healthcare in Korea.



Seoul National University Hospital Group

Seoul National University Hospital has carried forward the spirit of Jejungwon since 1885, faithfully fulfilling its role as the nation's central hospital and leading the advancement of healthcare in Korea.



SLOGAN Beyond Excellence

MISSION To promote a healthy and happy life through world-best education, research and clinical practice

VISION One SNUH Network - Pioneering the Future of Healthcare for All

Vision by Area	Clinical Practice	Education	Research	Public Healthcare	Organizational Culture
	Standard for Future Medical Care	Campus for Global Leaders	Hub for Cutting-Edge Research	Hope for National Healthcare	A Workplace Where Dreams Come True

CORE VALUE



Message from the President



Seoul National University Hospital has, since the founding of Jejungwon in 1885, built the history of healthcare in Korea based on the spirit of Insul Jejung (仁術濟衆)—healing humanity through benevolent medical practice. Now, we seek to take another leap forward toward becoming a hospital of the future.

As the nation's central hospital, we will prepare for unpredictable national crises and lead the development of new healthcare services in response to rapidly changing social and medical environments.

In the era of the Fourth Industrial Revolution, we will integrate our world-class medical technologies with digital health to realize future healthcare services once imagined only in theory.

We will further strengthen the Seoul National University Hospital Network while safeguarding public health through specialized roles across each affiliated hospital. In partnership with the government, we will also strive to establish a new public healthcare system, building a future medical system that connects our network with public healthcare institutions nationwide.

We ask for your continued interest and support as Seoul National University Hospital—the institution that has stood at the center of Korean healthcare—moves forward to become a world-leading hospital shaping the future of medicine.

Young Tae Kim
President & CEO

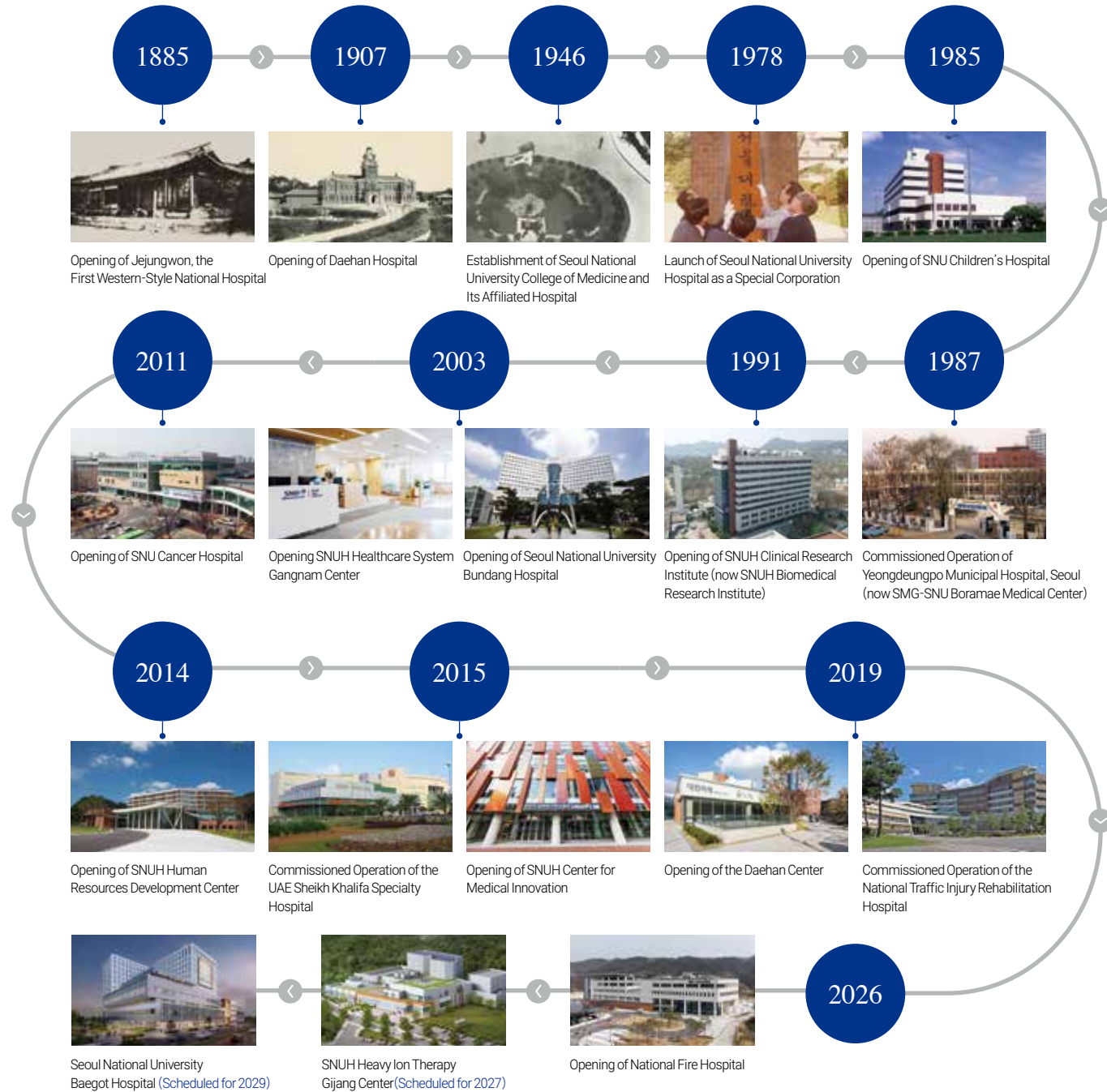


SEOUL NATIONAL UNIVERSITY HOSPITAL



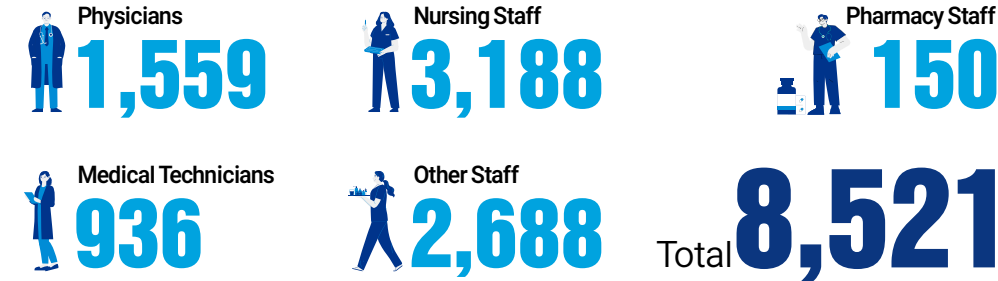
SNUH HISTORY

As the Leading National Hospital,
We Build a Healthier Tomorrow



Hospital Status(2025 Year-End)

Workforce



Inpatient Beds



Category	Main Hospital	Children's Hospital	Cancer Hospital	Total
General Beds	1,130	260	46	1,436
Special Beds	23	6	-	29
Intensive Care Units	106	24	-	130
Neonatal Intensive Care Units	-	40	-	40
Total	1,259	330	46	1,635

*General Beds: General wards, closed psychiatric wards
*Special Beds: Protective Isolation rooms, isolation rooms

Patient Volume



Category	Main Hospital	Children's Hospital	Cancer Hospital	Total
Outpatients	1,316,092	274,932	486,455	2,077,479
Inpatients	335,384	91,063	1,551	427,998

Surgical and Diagnostics



Category	Main Hospital	Children's Hospital	Cancer Hospital	Total
Number of Surgeries	25,664	7,677	-	33,341
Diagnostic Imaging Exams	1,003,555	275,420	327,427	1,606,402
Radiation Therapy	70,864	-	-	70,864

Research Achievements (Hospital & College of Medicine)

SCI Publications (SNUH & SNU College of Medicine)

2014	2015	2016	2017	2018	2019	2020	2021	2022	2023	2024
2,493	2,747	2,928	2,979	2,986	3,024	3,350	3,777	3,413	3,111	3,181

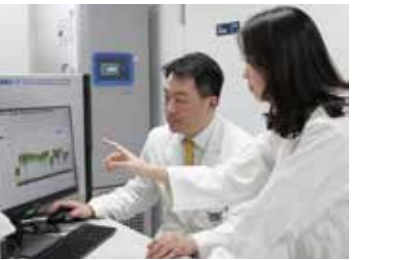
Publications with an Impact Factor ≥ 10 (SNUH & SNU College of Medicine)

2014	2015	2016	2017	2018	2019	2020	2021	2022	2023	2024
91	88	123	141	158	169	206	328	344	370	354

Research Funding and Project Performance

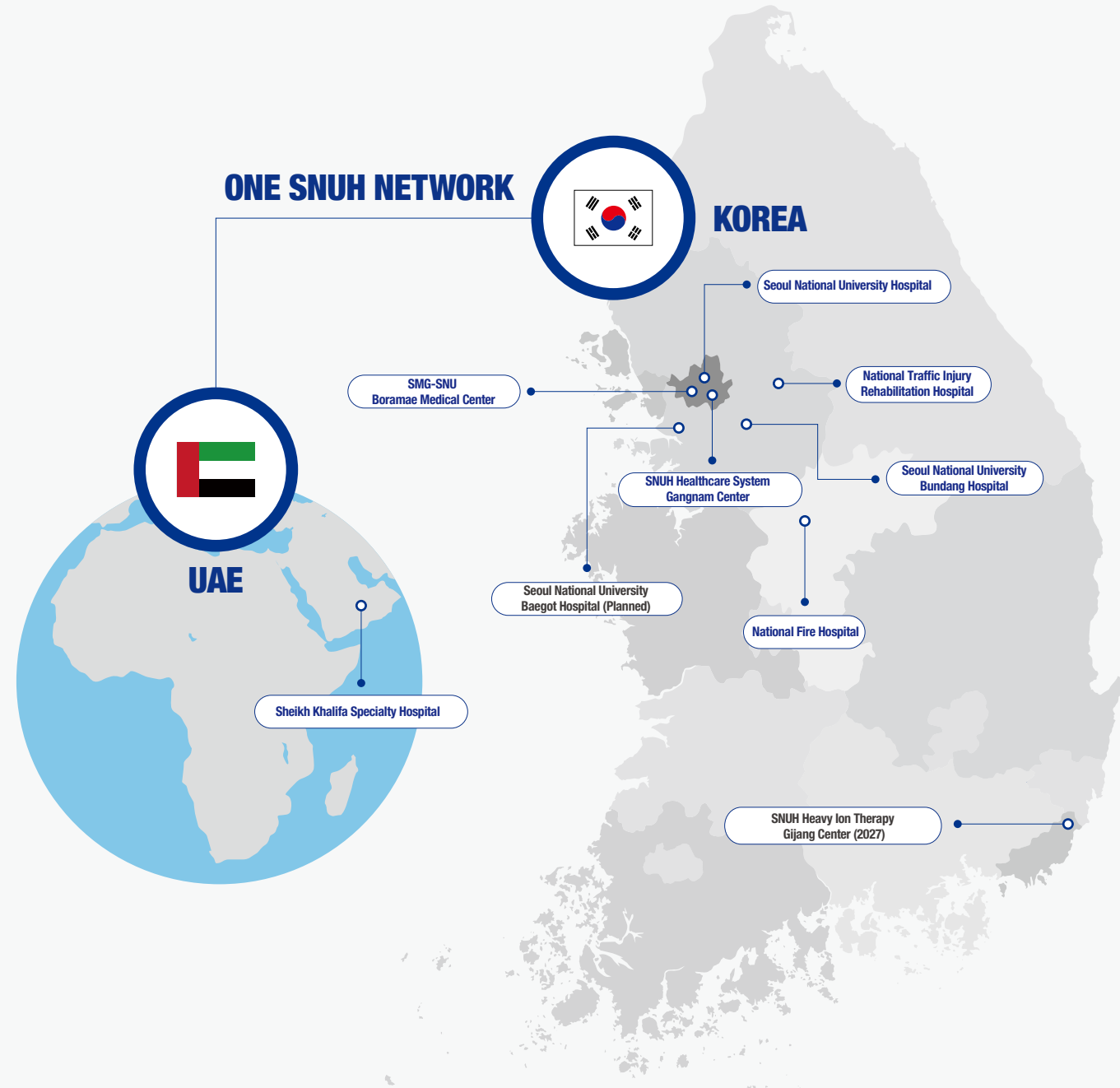
(Unit: Million KRW, Cases)

Year	Category	Internal	Government	Commissioned	Total
2014	Research Funding	3,557	30,432	44,606	78,595
	No. of Projects	145	238	565	948
2015	Research Funding	3,448	35,856	46,542	85,846
	No. of Projects	173	254	508	935
2016	Research Funding	5,135	37,166	47,867	90,168
	No. of Projects	175	270	514	959
2017	Research Funding	3,361	39,061	51,690	94,112
	No. of Projects	152	367	642	1,161
2018	Research Funding	3,308	42,653	64,860	110,821
	No. of Projects	151	306	551	1,008
2019	Research Funding	3,451	61,004	64,500	128,955
	No. of Projects	152	367	642	1,161
2020	Research Funding	4,712	57,890	69,125	131,727
	No. of Projects	210	426	650	1,286
2021	Research Funding	5,396	66,368	95,089	166,853
	No. of Projects	223	453	829	1,505
2022	Research Funding	5,463	63,722	80,455	149,640
	No. of Projects	219	432	711	1,362
2023	Research Funding	5,422	71,839	70,308	147,569
	No. of Projects	213	480	705	1,398
2024	Research Funding	4,927	93,522	94,985	193,434
	No. of Projects	164	469	756	1,389
2025	Research Funding	6,240	101,460	93,242	200,942
	No. of Projects	191	468	731	1,390



Healthcare Network

An Integrated Network Driving Advanced Healthcare



Seoul National University Bundang Hospital | SMG-SNU Boramae Medical Center | Healthcare System Gangnam Center



Children's Hospital

Established in 1985, Seoul National University Children's Hospital is Korea's first and leading pediatric specialty hospital, equipped with outstanding medical professionals, world-class facilities, and advanced equipment. It provides the latest treatments for severe and rare pediatric diseases, including pediatric cancers, and sets new standards in pediatric care based on extensive clinical experience, delivering medical services at a global level. Beyond clinical care, the hospital operates programs such as the Children's Hospital School, pediatric home healthcare, pediatric palliative care, and a center for children with severe illnesses. Through these initiatives, it is expanding into new areas to address the diverse educational, family, and social challenges arising from pediatric diseases. In addition, as a government-designated "Public Pediatric Specialty Care Center" and "Pediatric Emergency Medical Center," the hospital fulfills its public responsibility in providing critical and emergency pediatric care.



Cancer Hospital

Your FIRST Hospital for a Cancer-Free Life

Built on a commitment to valuing every life as the highest priority and driven by advanced medical technology, Seoul National University Cancer Hospital has led the healthcare landscape in Korea. SNU Cancer Hospital stands as a global leader dedicated to cancer-free living. With a team of specialized oncology professionals delivering compassionate care, state-of-the-art medical systems, and world-class research capabilities, we strive to become your FIRST hospital on the journey toward overcoming cancer.



Biomedical Research Institute

The Biomedical Research Institute was established in 1991 to carry out the research function among the core missions of Seoul National University Hospital—education, research, and clinical care—as the nation's central hospital. Through systematic and organized research activities at an international level, the Institute advances the field of biomedical science. Furthermore, by promoting collaborative research with national, public, and private research institutions, it contributes to medical advancement, the improvement of public health, and economic development.



Seoul National University Bundang Hospital

Established in 2003 as a globally recognized full-digital hospital, Seoul National University Bundang Hospital pioneered the digital transformation of healthcare and rapidly grew into one of Korea's leading hospitals. It has exported healthcare information systems to countries including Saudi Arabia and the UAE, as well as to advanced medical IT markets such as the United States and Japan, demonstrating its global leadership in healthcare IT. As the first in Korea, the hospital led the establishment of a convergence research complex—Healthcare Innovation Park—linking industry, academia, research institutes, and local governments. In 2025, it was designated as a research-driven hospital, further strengthening its role as a hub for healthcare R&D. Designated as a regional infectious disease specialty hospital for the Seoul metropolitan area, it is actively advancing the development of a control tower to respond to infectious disease outbreaks and is building key infrastructure to prepare for future public health crises.



Seoul Metropolitan Government Seoul National University Boramae Medical Center

Since 1987, SMG-SNU Boramae Medical Center has been operated under commission by Seoul National University Hospital, providing all Seoul citizens with the highest standard of public healthcare services through its highly qualified medical staff. In addition, the hospital is committed to sustainable growth and development by faithfully carrying out mid- to long-term initiatives such as strengthening critical care capabilities, establishing a Safe Respiratory Care Center, and improving the public healthcare delivery system. Based on high-quality medical services, it presents a new model for public healthcare and continues to lead the advancement of public health in Korea.



SNUH Healthcare System Gangnam Center

Established in 2003, the Healthcare System Gangnam Center is a specialized health screening institution built on Seoul National University Hospital's diagnostic expertise, distinguished faculty, and a proven hospital information system. Based on extensive clinical experience and systematically managed screening data, the center operates personalized health screening programs tailored to individual characteristics. By applying a smart screening system, it enhances both efficiency and reliability. In addition, through its lifelong health management clinic, the center provides preventive, patient-centered healthcare services by seamlessly connecting post-screening care with ongoing health management.

Healthcare Network

National Traffic Injury Rehabilitation Hospital | National Fire Hospital | Heavy Ion Therapy Gijang Center



National Traffic Injury Rehabilitation Hospital

Established in 2014 by the Ministry of Land, Infrastructure and Transport, the National Traffic Injury Rehabilitation Hospital has been operated under commission by Seoul National University Hospital since 2019. It is a public medical institution specializing in rehabilitation for traffic accident victims and patients with severe trauma.

The hospital provides specialized rehabilitation treatment for various types of injuries, including brain injuries, spinal cord injuries, and musculoskeletal damage. Equipped with advanced rehabilitation infrastructure—such as wearable walking robots and hydrotherapy—it offers one-on-one customized rehabilitation programs delivered by dedicated therapists.

Notably, it is the only institution in Korea to apply both the pilot reimbursement systems for automobile insurance rehabilitation and industrial accident compensation insurance rehabilitation, enabling patients to receive high-quality, specialized rehabilitation care with reduced financial burden.

In addition, through its affiliated Traffic Rehabilitation Research Institute, the hospital continuously conducts basic and policy research on injuries, disabilities, and rehabilitation treatment, contributing to the advancement of rehabilitation medicine.



National Fire Hospital

Established in Chungbuk Innovation City to strengthen the medical safety net for firefighters and local residents, the National Fire Hospital provides specialized treatment for high-incidence conditions among firefighters, including burns, musculoskeletal disorders, rehabilitation, and mental health.

In addition, it will lead research in the field of fire service medicine and serve as a regional hub medical institution.



Heavy Ion Therapy Gijang Center (Scheduled for 2027)

Seoul National University Hospital is establishing a state-of-the-art heavy ion accelerator for cancer treatment in Gijang, Busan, as part of a project with a total investment of KRW 300 billion.

Heavy ion therapy is a next-generation cancer treatment that uses a heavy ion accelerator to propel carbon ions to approximately 70% of the speed of light, enabling the precise removal of cancer cells at depths of up to 30cm within the body. This technology reduces radiation side effects while improving survival rates and is expected to be particularly effective for treating refractory cancers.

Through the Heavy Ion Therapy Gijang Center, Seoul National University Hospital aims to lead advancements in heavy ion therapy and related research fields.

UAE Sheikh Khalifa Specialty Hospital | Seoul National University Baegot Hospital



UAE Sheikh Khalifa Specialty Hospital

Seoul National University Hospital signed a contract with the government of the United Arab Emirates in 2014 to operate the Sheikh Khalifa Specialty Hospital (SKSH). This marked the first overseas operation of a general hospital by a Korean medical institution, with Seoul National University Hospital taking the lead.

With highly skilled medical personnel dispatched from Seoul National University Hospital and a specialized system, the hospital has provided advanced medical services locally, giving many UAE residents the confidence to receive high-quality treatment within their own country rather than seeking care abroad.

In 2024, Seoul National University Hospital successfully renewed its contract to operate SKSH, continuing stable operations for over a decade. In addition, it has strengthened its specialized care capabilities, focusing on three major centers—cardiovascular, cerebrovascular, and cancer—thereby solidifying its reputation as a trusted healthcare institution within the local community.



Seoul National University Baegot Hospital (Scheduled for 2029)

Seoul National University Baegot Hospital, to be established in Siheung, Gyeonggi Province, will be a comprehensive hospital with approximately 800 beds, spanning from one basement level to 12 above-ground floors, where clinical care and research are seamlessly integrated.

As a key public healthcare hub for southwestern Gyeonggi Province, the hospital will expand regional medical infrastructure, take responsibility for the treatment of severe and rare diseases, and fulfill the mission of a national central hospital.

Furthermore, it is expected to serve as a core hub that integrates the clinical, research, and educational capabilities of the Seoul National University Hospital Group—leading convergence medical research and fostering highly skilled healthcare professionals who will shape the nation's future.

In particular, as a central pillar of a "mega bio cluster" linked with nearby bio-specialized industrial complexes, it will drive the growth of the global bio industry and open new horizons for the future of medicine in Korea.

Public Healthcare

Connecting Regions in the Public Sector, Safeguarding Families, and Taking Responsibility for the Nation's Well-being



Caring for Pediatric Patients by Supporting Not Only Their Health, but Their Families' Lives as Well

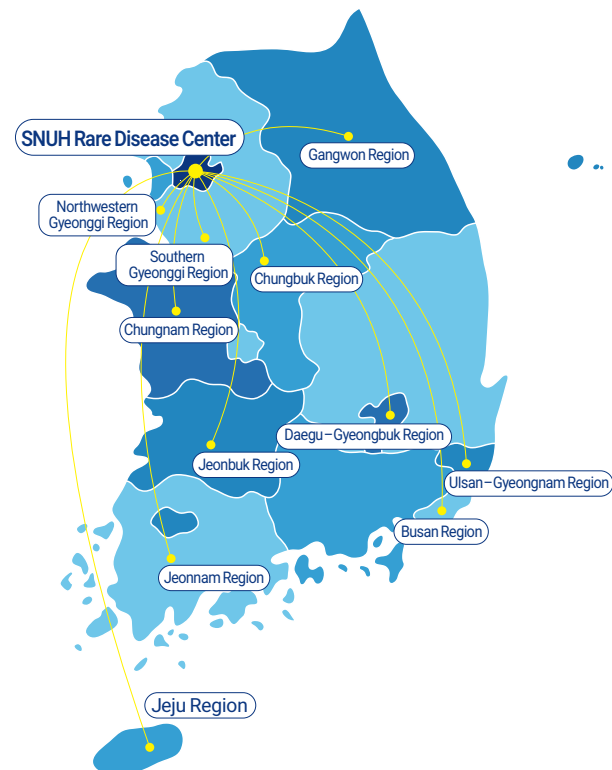
SNUH Nexon Children's Integrated Care Center

Advances in medicine have improved survival rates; however, many high-risk pediatric patients are discharged while still dependent on medical devices such as ventilators. As a result, many families face difficulties in balancing caregiving responsibilities with family life and economic activities. The Nexon Children's Integrated Care Center is Korea's first independent short-term care center for children, established through collaboration among the Nexon Foundation, the Ministry of Health and Welfare, and Seoul National University Hospital to support such families. Specialized medical staff from Seoul National University Children's Hospital provide tailored care and nursing suited to each child, staying by their side in place of guardians. In addition, pediatricians and specialists are present 24 hours a day to monitor each child's condition. With a home-like environment, the center offers emotional stability and meaningful experiences through various programs such as play therapy, music therapy, and art therapy.

Expanding Access to Care for Patients with Rare Diseases through Collaboration with Regional Networks

Rare Disease Center

There are approximately 8,000 rare diseases, with diverse classifications and highly complex clinical symptoms, making diagnosis difficult in many cases. The Rare Disease Center leads both clinical care and research by operating multidisciplinary specialty clinics composed of experts from various fields and by introducing and developing advanced diagnostic and treatment technologies. As the "Central Support Center" designated by the Ministry of Health and Welfare under the Regional Hub Center Program, it has established a nationwide network of 11 regional rare disease centers. Through this network, the Center is strengthening Korea's capacity for rare disease care and expanding access to high-quality medical services.



- Nationwide**
11Centers
Network of Regional Rare Disease Centers
- Main Hospital & Cancer Hospital**
40Clinics
Adult Clinics in Operation
- Children's Hospital**
38Clinics
Pediatric Clinics in Operation

Shaping the Future of Healthcare in Korea, Together

Seoul National University Hospital Patron's Association

Seoul National University Hospital, through the generous contributions of its supporters, fulfills its mission as the nation's central hospital by practicing the spirit of Insul Jejung—healing humanity through benevolent medical care. It strengthens competitiveness in the medical field and leads the future of medicine as a world-class hospital in education, research, and clinical care.



Development Fund
A meaningful contribution for future generations



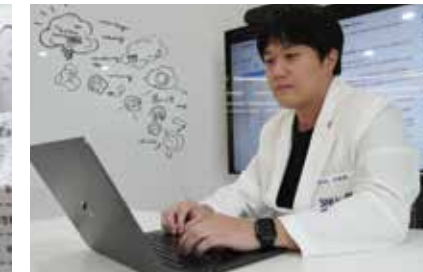
Research Fund
A global leader advancing the future of medicine



Clinical Environment Improvement Fund
Efforts toward optimized patient care



Support Fund for Low-Income Patients
A warm helping hand for the underserved



Other Designated Funds
Building a healthier society together



Seoul National University Hospital Patron's Association Inquiries
+82-2-2072-1004



SNUH  SEOUL NATIONAL UNIVERSITY
HOSPITAL

101, Daehak-ro, Jongno-gu, Seoul 03080, Republic of Korea

Tel. +82-2-2072-0505

<https://www.snuh.org>

